



 vas  
PARLORWATCH

**Monitor your  
milk production and  
performance instantly!**



## Monitor your milk production and performance instantly!

Let **PARLORWATCH** help you manage...People are busy, especially on a dairy. **PARLORWATCH** can be the extra hands you need to monitor your herd's production, milker's performance and wash cycles. This easy to use program provides information about pounds of milk per pen, rolling herd average and bulk tank totals in easy to read reports. Simple to use and accurate information.

### Watch the herd's milk production!

- Monitor the pounds of milk per cow by pen for each milking
- Capture production deviations for each pen to assist in herd management
- Supports the ability to add overflow alarms giving you additional assurance.

### Watch the milker's performance!

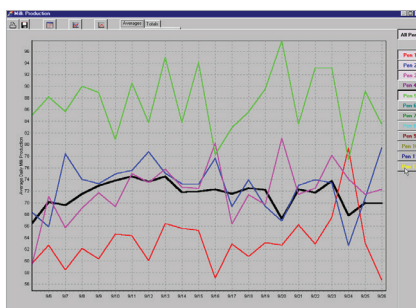
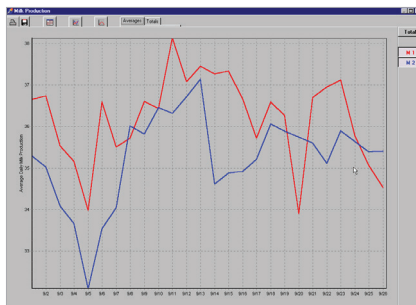
- See the start, stop, and total time for each pen & work shift.
- View and evaluate the number of cows per hour being milked.
- View and evaluate the pounds of milk per hour.
- Monitor the time interval (gap) between pens.
- Shows the milk temperature after the pre-cooler by pen and shift.





# vas PARLORWATCH

Demo Dairy											
MILKING 1		Pen 5		Cows		BB Milk		IB			
Start:	9:31	1554	255	MPH:	1402						
Water:	9:58	589	MT	0							
Pen	Milk /Nr	Cow	Total	Start	Stop	Pen	Max	Min	Temp	Dev	
1	2302	2114	23	86	85	11:29	6:30	5:19	0	59	0
2	2423	2140	27	89	79	11:09	5:07	7:05	0	57	1
3	2142	2346	28	81	84	11:09	7:13	6:28	0	56	1
4	1936	2083	22	87	90	0:58	6:26	6:24	0	56	0
5	259	1330	32	8	120	0:03	9:26	9:29	0	55	0



Example Parlor Watch Reports and Graphs

## Watch the milking wash up performance!

- Ability to set warnings when the minimum temperatures are not exceeded during wash up cycles.
- Record wash duration and water volume each wash cycle.
- Identify cleaning problems before loss of milk check premiums.

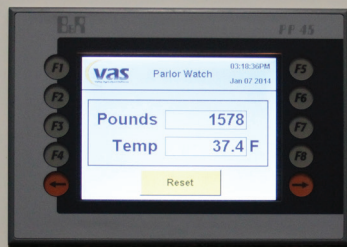
## Easy for the milkers to use!

- Easy touch screen with only one button for milkers to push between pens; making this simple to implement and utilize.
- Bright LED display mounted in the parlor will show the milkers important pen and temperature information at all times.

## Manager friendly!

- Used in conjunction with DairyComp 305, pen counts in ParlorWatch can be automatically updated.
- Capable of automatically printing an easy-to-read report after each milking for owners and employees.
- Detailed reports and color graphs can be supplied to provide crucial data for management decisions.

Order **PARLORWATCH** now at Toll Free 888-225-6753 or [vas.com](http://vas.com)



*"This tool allows me to manage employees working in the parlor by monitoring efficiencies and increasing milk production."  
"ParlorWatch is easy to use and is a valuable tool."*

*Lorenzo Garcia, Wild Cat Dairy, Ft. Morgan, Colorado*